



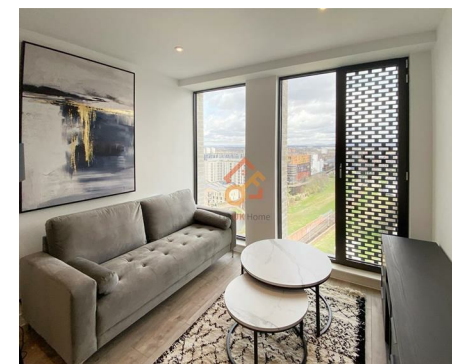
Let **UK** Home

1 Bedrooms

Flat

Located  
in Manchester

**£1,450 Per Month**



[padmin@letukhome.co.uk](mailto:padmin@letukhome.co.uk)

<https://www.letukhome.co.uk/>

01615219812



# 250 Great Ancoats Street Manchester

M4 7BU



Let UK Home are excited to offer a stunning one bedroom apartment in Victoria House located in Manchester M4 7BU.

The flat comprises a spacious open kitchen with a stylishly attached dining area, a magnificent living room, one bright bedroom and one modern bathroom.

The apartment will offer residents high-end, comprehensive exclusive facilities, including concierge services, a private premium gym for homeowners, shared co-working spaces, an elegant residents' lounge, and a 360° rooftop terrace overlooking the entire city, fully meeting the quality-of-life needs of elite individuals.

The surrounding area is home to renowned universities, creating a strong academic atmosphere. It is close to the University of Manchester, accessible by bike; within walking distance to Manchester Metropolitan University, providing easy access to higher education resources, making it an ideal residence for students and education professionals.

Manchester Piccadilly Railway Station is within walking distance, allowing quick direct access to London and other major cities in the UK. It is also adjacent to Piccadilly Gardens tram station, enabling easy travel across Manchester. The public transportation network is extensive, making commuting highly efficient and convenient.

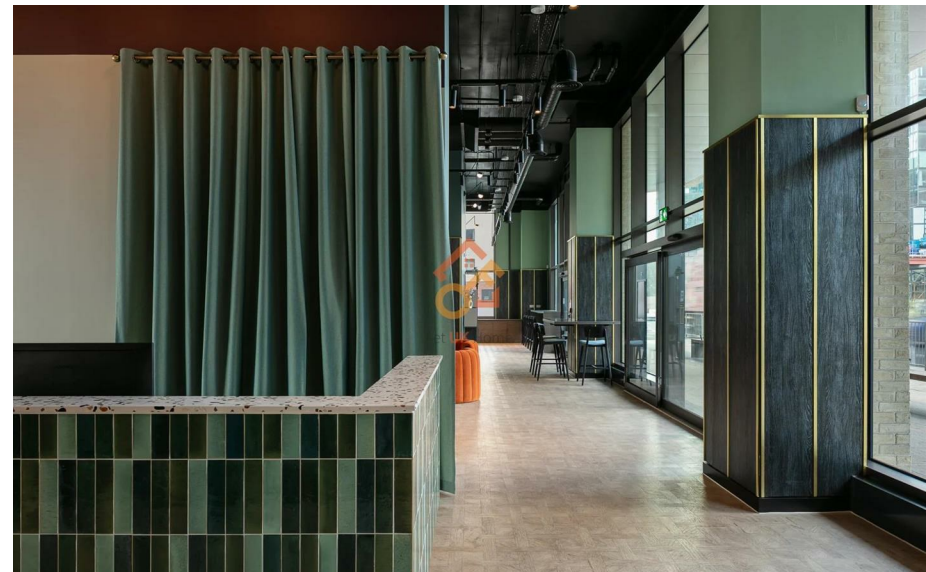
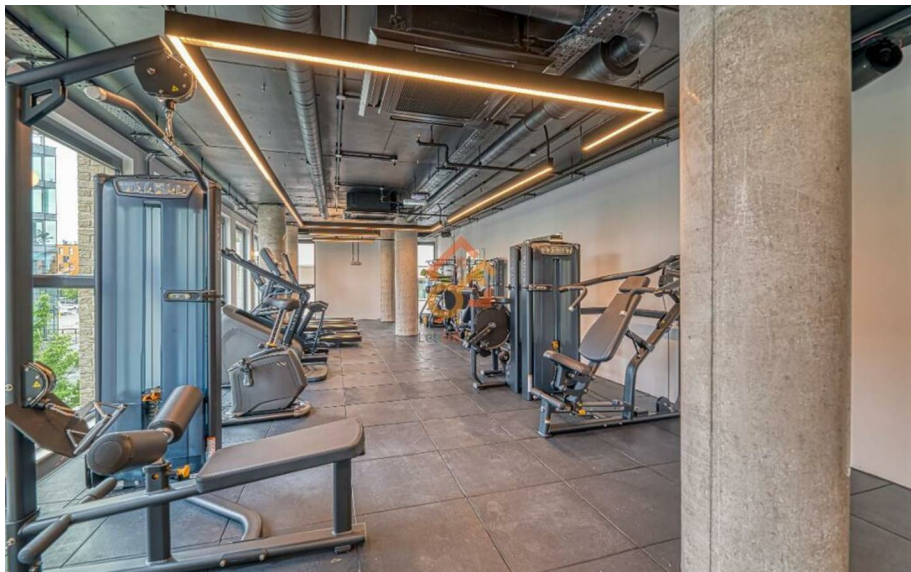
The area around the development is rich in recreational facilities. Within walking distance are the Michelin-starred restaurant Mana, the popular Rudy's Neapolitan

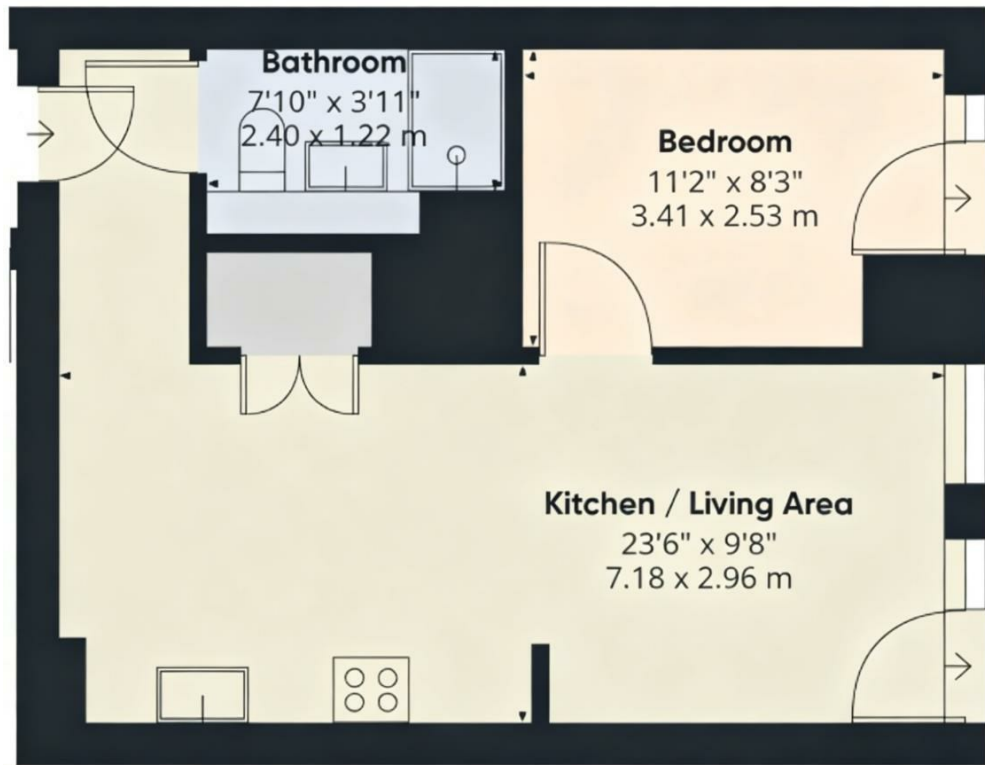
# 250 Great Ancoats Street Manchester

£1,450 Per Month



- 13th Floor
- 24h Security
- Co-working Space
- Rooftop Terrace
- Concierge Service
- Residents Lounge
- The Gym
- EPC Rating: B





**Total floor area**

**39 square metres**



Let **UK** Home

1/F, St James Tower 7 Charlotte  
Street  
Manchester  
M1 4DZ

01615219812

[pmadmin@letukhome.co.uk](mailto:pmadmin@letukhome.co.uk)

**Council Tax Band: B**

**Local Authority:**

Agents Note: Whilst every care has been taken to prepare these particulars, they are for guidance purposes only. All measurements are approximate and are for general guidance purposes only and whilst every care has been taken to ensure their accuracy, they should not be relied upon and potential buyers/tenants are advised to recheck the measurements.

Energy Efficiency Rating		Current	Potential
Very energy efficient - lower running costs			
(92 plus) <b>A</b>			
(81-91) <b>B</b>		84	84
(69-80) <b>C</b>			
(55-68) <b>D</b>			
(39-54) <b>E</b>			
(21-38) <b>F</b>			
(1-20) <b>G</b>			
Not energy efficient - higher running costs			
<b>England &amp; Wales</b>		EU Directive 2002/91/EC	

<https://www.letukhome.co.uk/>